

State of Wyoming Corner Record

(In compliance with the CORNER PERPETUATION AND FILING ACT, Wyoming Statutes, 1977, Section 36~11~101, et seq., and the Rules and Regulations of the Board of Registration for Professional Engineers and Professional Land Surveyors)

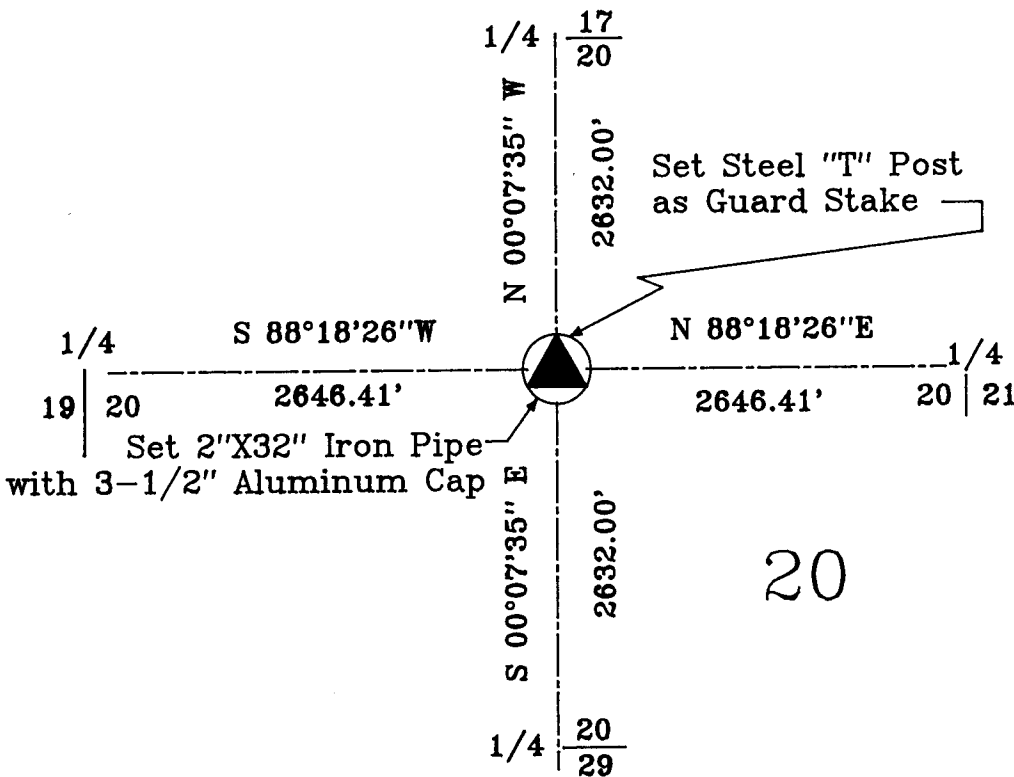
The reverse side of this form may be used if more space is needed.

The Record of the original survey and the citation of the source of the historical information (if the corner is lost or obliterated). The description of the corner monumentation evidence as found and/or the monument and it's accessories as established to perpetuate the location of this corner. A sketch of the relative location of this Monument, accessories, and reference points with the course and distance to adjacent corner (s) (if determined during this Survey). The Method and Rationale used for the reestablishment of lost and obliterated corner.

GLO: Survey performed by Edwin James, Deputy Surveyor under joint contract with Alfred M. Rogers, contract No. 15; Contract let 20 May A.D.1871 finished 16 June A.D.1871.

THIS CORNER WAS NOT SET DURING GLO SURVEY

Set 2"X32" Iron Pipe with 3-1/2" Aluminum Cap at the point of intersection of a line from 1/4 17,20 and 1/4 20,20 and the line from 1/4 19,20 and 1/4 20,21.



1999 JUN 29 AM 11:55
LARAMIE COUNTY CLERK
COURT HOUSE, Rm. 101

255184

Date of Field Work: June A.D. 1999 Office Reference: Open Trail Est. 9030

Cross Index Diagram

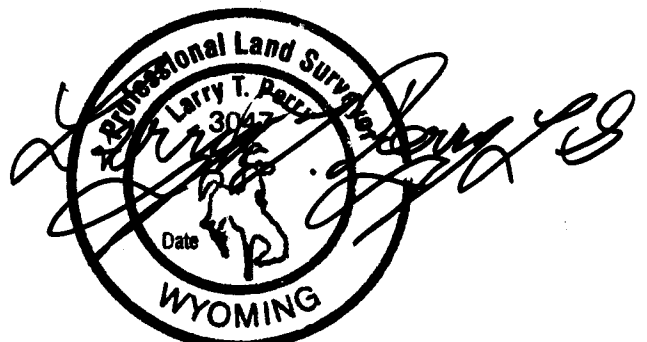
T14 N. R.63 W. 6th P.M.

	1	2	3	4	5	6	7	8	9	10	11	12	13	14	15	16	17	18	19	20	21	22	23	24	25	
A																										
B																										
C																										
D																										
E																										
F																										
G																										
H																										
I																										
J																										
K																										
L																										
M																										
N																										
O																										
P																										
Q																										
R																										
S																										
T																										
U																										
V																										
W																										
X																										
Y																										
Z																										

Firm/Agency, Address
Terrestrial Surveying & Mapping Co.
"Your Friendly Neighborhood Surveyor"
1127 Terry Ranch Road
Cheyenne, Wyoming 82007
Telephone Number: (307) 634-9360

This Corner Record was prepared by me or under my direction and supervision.

SEAL & SIGNATURE



Corner Name: C~1/4 Section: 20 T. 14 N. R. 63 W. 6th P.M. Cross Index No. P~7